

Please check the examination details below before entering your candidate information

Candidate surname

Other names

Centre Number

Candidate Number

--	--	--	--	--

--	--	--	--

## Pearson Edexcel Level 3 GCE

Time 2 hours

Paper  
reference

**9MA0/01**

### Mathematics

Advanced

**PAPER 1: Pure Mathematics 1**

**You must have:**

Mathematical Formulae and Statistical Tables (Green), calculator

Total Marks

**Candidates may use any calculator allowed by Pearson regulations. Calculators must not have the facility for symbolic algebra manipulation, differentiation and integration, or have retrievable mathematical formulae stored in them.**

### Instructions

- Use **black** ink or ball-point pen.
- If pencil is used for diagrams/sketches/graphs it must be dark (HB or B).
- **Fill in the boxes** at the top of this page with your name, centre number and candidate number.
- Answer **all** questions and ensure that your answers to parts of questions are clearly labelled.
- Answer the questions in the spaces provided  
– *there may be more space than you need.*
- You should show sufficient working to make your methods clear. Answers without working may not gain full credit.
- Inexact answers should be given to three significant figures unless otherwise stated.

### Information

- A booklet 'Mathematical Formulae and Statistical Tables' is provided.
- There are 16 questions in this question paper. The total mark for this paper is 100.
- The marks for **each** question are shown in brackets  
– *use this as a guide as to how much time to spend on each question.*

### Advice

- Read each question carefully before you start to answer it.
- Try to answer every question.
- Check your answers if you have time at the end.

Turn over ►

P69601A

©2022 Pearson Education Ltd.

Q:1/1/1/1/



  
Pearson





2.

$$f(x) = (x - 4)(x^2 - 3x + k) - 42 \text{ where } k \text{ is a constant}$$

Given that  $(x + 2)$  is a factor of  $f(x)$ , find the value of  $k$ .

(3)

DO NOT WRITE IN THIS AREA

DO NOT WRITE IN THIS AREA

DO NOT WRITE IN THIS AREA









4. (a) Express  $\lim_{\delta x \rightarrow 0} \sum_{x=2.1}^{6.3} \frac{2}{x} \delta x$  as an integral.

(1)

(b) Hence show that

$$\lim_{\delta x \rightarrow 0} \sum_{x=2.1}^{6.3} \frac{2}{x} \delta x = \ln k$$

where  $k$  is a constant to be found.

(2)

DO NOT WRITE IN THIS AREA

DO NOT WRITE IN THIS AREA

DO NOT WRITE IN THIS AREA



















8.

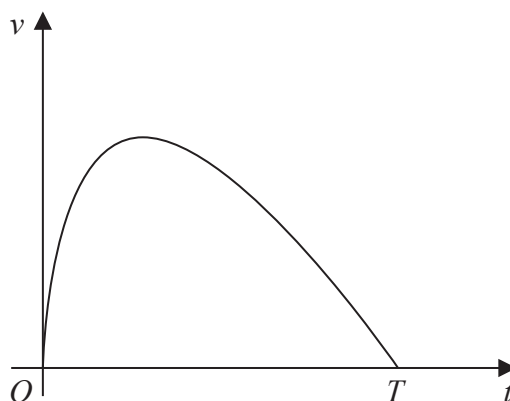


Figure 2

A car stops at two sets of traffic lights.

Figure 2 shows a graph of the speed of the car,  $v \text{ ms}^{-1}$ , as it travels between the two sets of traffic lights.

The car takes  $T$  seconds to travel between the two sets of traffic lights.

The speed of the car is modelled by the equation

$$v = (10 - 0.4t) \ln(t + 1) \quad 0 \leq t \leq T$$

where  $t$  seconds is the time after the car leaves the first set of traffic lights.

According to the model,

(a) find the value of  $T$  (1)

(b) show that the maximum speed of the car occurs when

$$t = \frac{26}{1 + \ln(t + 1)} - 1 \quad (4)$$

Using the iteration formula

$$t_{n+1} = \frac{26}{1 + \ln(t_n + 1)} - 1$$

with  $t_1 = 7$

(c) (i) find the value of  $t_3$  to 3 decimal places,  
 (ii) find, by repeated iteration, the time taken for the car to reach maximum speed. (3)

---



---



---



---















Question 9 continued

A large rectangular area with rounded corners containing 30 horizontal lines for writing.

DO NOT WRITE IN THIS AREA

DO NOT WRITE IN THIS AREA

DO NOT WRITE IN THIS AREA





10. A scientist is studying the number of bees and the number of wasps on an island.

The number of bees, measured in thousands,  $N_b$ , is modelled by the equation

$$N_b = 45 + 220e^{0.05t}$$

where  $t$  is the number of years from the start of the study.

According to the model,

(a) find the number of bees at the start of the study, (1)

(b) show that, exactly 10 years after the start of the study, the number of bees was increasing at a **rate** of approximately 18 thousand per year. (3)

The number of wasps, measured in thousands,  $N_w$ , is modelled by the equation

$$N_w = 10 + 800e^{-0.05t}$$

where  $t$  is the number of years from the start of the study.

When  $t = T$ , according to the models, there are an equal number of bees and wasps.

(c) Find the value of  $T$  to 2 decimal places. (4)

Lined writing area with 18 horizontal lines.



















12.

In this question you must show all stages of your working.

Solutions relying on calculator technology are not acceptable.

Show that

$$\int_1^{e^2} x^3 \ln x \, dx = ae^8 + b$$

where  $a$  and  $b$  are rational constants to be found.

(5)

DO NOT WRITE IN THIS AREA

DO NOT WRITE IN THIS AREA

DO NOT WRITE IN THIS AREA







13. (i) In an arithmetic series, the first term is  $a$  and the common difference is  $d$ .

Show that

$$S_n = \frac{n}{2} [2a + (n - 1)d] \tag{3}$$

(ii) James saves money over a number of weeks to buy a printer that costs £64

He saves £10 in week 1, £9.20 in week 2, £8.40 in week 3 and so on, so that the weekly amounts he saves form an arithmetic sequence.

Given that James takes  $n$  weeks to save exactly £64

(a) show that

$$n^2 - 26n + 160 = 0 \tag{2}$$

(b) Solve the equation

$$n^2 - 26n + 160 = 0 \tag{1}$$

(c) Hence state the number of weeks James takes to save enough money to buy the printer, giving a brief reason for your answer.

(1)

---

---

---

---

---

---

---

---

---

---

---

---

---

---

---

---

---

---

---

---

---

---

---

---

---

DO NOT WRITE IN THIS AREA

DO NOT WRITE IN THIS AREA

DO NOT WRITE IN THIS AREA



















15.

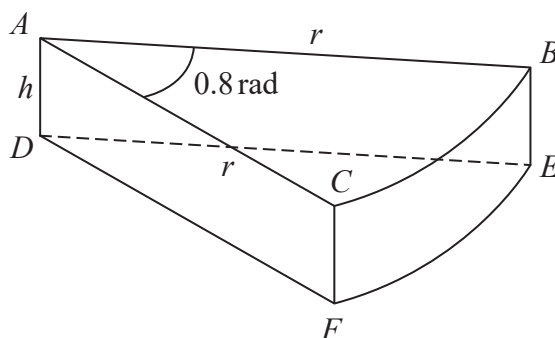


Figure 5

A company makes toys for children.

Figure 5 shows the design for a solid toy that looks like a piece of cheese.

The toy is modelled so that

- face  $ABC$  is a sector of a circle with radius  $r$  cm and centre  $A$
- angle  $BAC = 0.8$  radians
- faces  $ABC$  and  $DEF$  are congruent
- edges  $AD$ ,  $CF$  and  $BE$  are perpendicular to faces  $ABC$  and  $DEF$
- edges  $AD$ ,  $CF$  and  $BE$  have length  $h$  cm

Given that the volume of the toy is  $240 \text{ cm}^3$

(a) show that the surface area of the toy,  $S \text{ cm}^2$ , is given by

$$S = 0.8r^2 + \frac{1680}{r}$$

making your method clear.

(4)

Using algebraic differentiation,

(b) find the value of  $r$  for which  $S$  has a stationary point.

(4)

(c) Prove, by further differentiation, that this value of  $r$  gives the minimum surface area of the toy.

(2)

---



---



---



---



---



---



---













