

Name: _____

Maths Genie Stage 4

Test D

Instructions

- Use **black** ink or ball-point pen.
- Answer all questions.
- Answer the questions in the spaces provided
– *there may be more space than you need.*
- Diagrams are **NOT** accurately drawn, unless otherwise indicated.
- You must **show all your working out.**
- **Calculators may not be used.**

Information

- The marks for each question are shown in brackets
– *use this as a guide as to how much time to spend on each question.*

Advice

- Read each question carefully before you start to answer it.
- Keep an eye on the time.
- Try to answer every question.
- Check your answers if you have time at the end

- 1 (a) Write the ratio 72 : 120 in its simplest form.

$$36 : 60$$

$$18 : 30$$

$$9 : 15$$

$$3 : 5$$

$$\dots\dots\dots 3 : 5$$

(1)

- (b) In February, it rained on $\frac{4}{7}$ of days

Write the ratio of the days it rained to the number of days it did not rain.

$$\frac{4}{7} : \frac{3}{7}$$

$$4 : 3$$

$$\dots\dots\dots 4 : 3$$

(1)

(Total for Question 1 is 2 marks)

- 2 Find 21% of £160

$$\frac{160}{10} = 16 \quad (10\%)$$

$$2 \times 16 = 32 \quad (20\%)$$

$$\frac{160}{100} = 1.6 \quad (1\%)$$

$$32 + 1.6 = \pounds 33.60$$

1 mark for correct method

$$\pounds \dots\dots\dots 33.60$$

(Total for Question 2 is 2 marks)

- 3 Work out $\frac{5}{6}$ of 42

$$\frac{42}{6} = 7$$

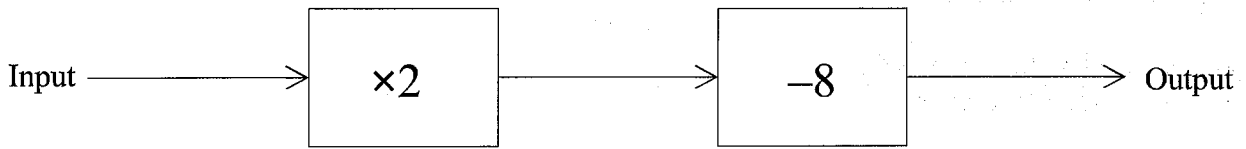
1 mark for 42/6 or 7

$$7 \times 5 = 35$$

$$\dots\dots\dots 35$$

(Total for Question 3 is 2 marks)

4 Here is a number machine.



(a) What is the **output** when the **input** is -5?

$$-5 \times 2 = -10$$

$$-10 - 8 = -18$$

$$\begin{array}{r} -18 \\ \hline \end{array} \quad (1)$$

(b) What is the **input** when the **output** is 20?

$$20 + 8 = 28$$

$$28 \div 2 = 14$$

$$\begin{array}{r} 14 \\ \hline \end{array} \quad (1)$$

(c) Show that there is a value of the input for which the input and the output have the same value.

$$\underline{\underline{8}} \times 2 = 16$$

$$16 - 8 = \underline{\underline{8}}$$

1 mark for attempts to find value

(2)

(Total for Question 4 is 4 marks)

5 A model car has the length of 12.5 cm.

The scale of the model is 1:40

Work out the length of the real car.

Give your answer in metres.

$$12.5 \times 40$$

1 mark for 12.5 x 40 or 500cm

$$125 \times 4 = 500 \text{ cm}$$

$$= 5 \text{ m}$$

5

.....m

(Total for Question 5 is 2 marks)

6 (a) Work out $\frac{5}{9} \div \frac{3}{7}$

Give your answer as a mixed number in its simplest form.

$$\frac{5}{9} \times \frac{7}{3} = \frac{35}{27} = 1 \frac{8}{27}$$

1 mark of 35/27 or equivalent

$$1 \frac{8}{27}$$

(2)

(b) Work out $1\frac{4}{5} \times \frac{3}{8}$

$$\frac{9}{5} \times \frac{3}{8} = \frac{27}{40}$$

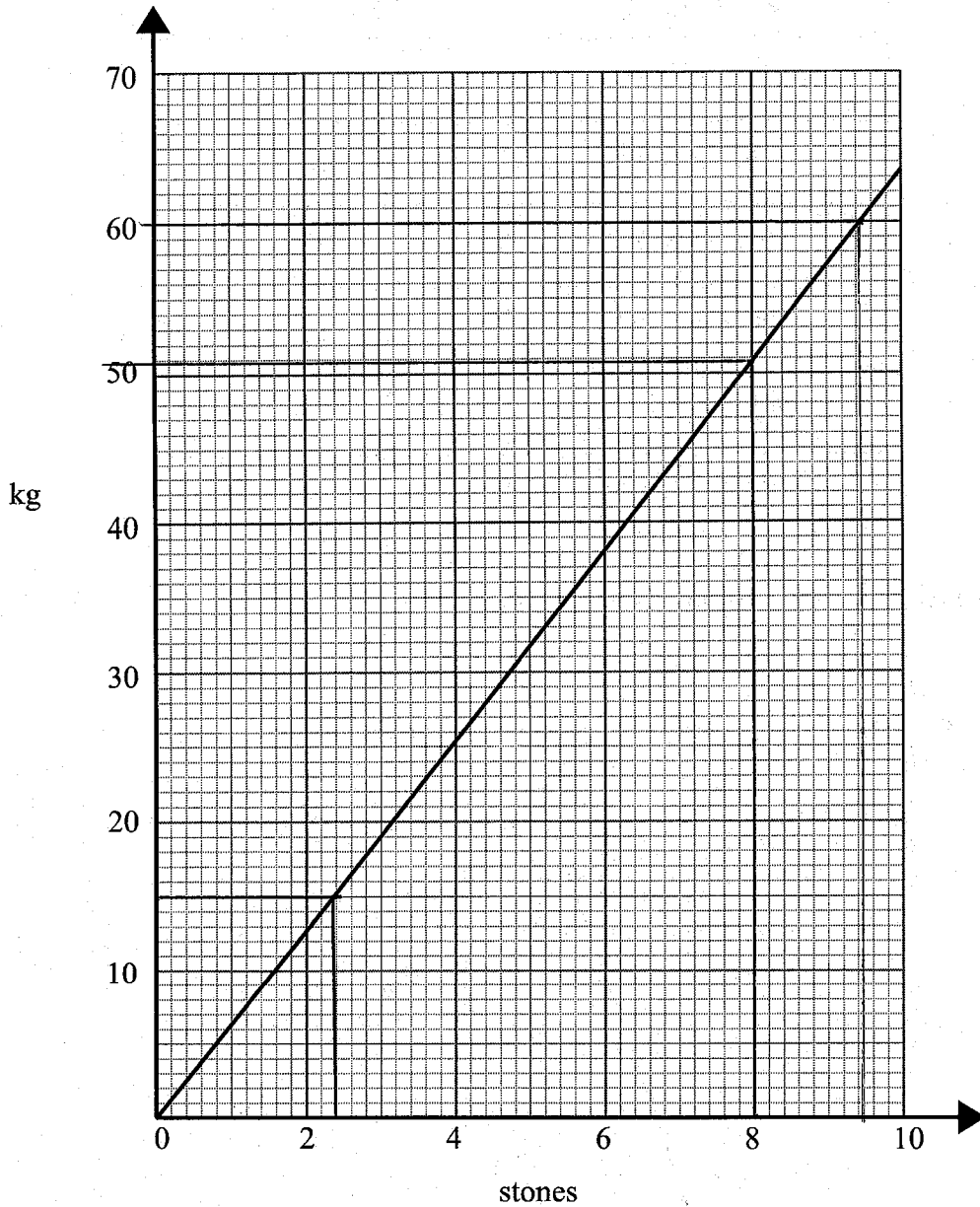
1 mark for 9/5

$$\frac{27}{40}$$

(2)

(Total for Question 6 is 4 marks)

7 You can use this graph to change between stones and kilograms.



(a) Change 8 stones to kilograms.

..... 51 kg
(1)

(b) Change 75 kilograms to stones.

15 kg = 2.4 stone
 60 kg = 9.4 stone
 75 kg = ~~12~~ 11.8 stone

OR $2.4 \times 5 = 12$
 1 mark for any correct method

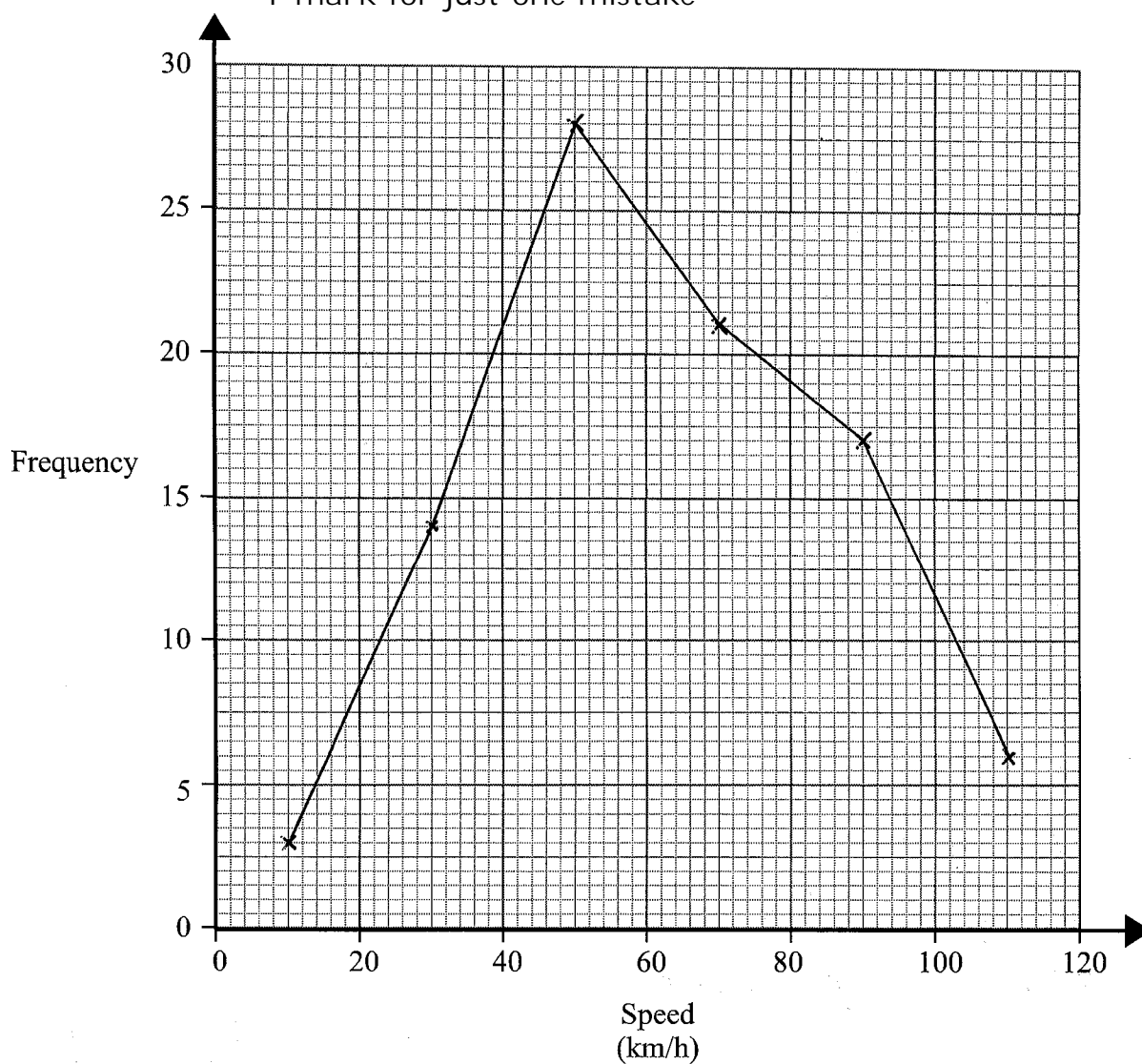
..... 12 stones
 [11.6 to 12] (2)
 (Total for Question 7 is 3 marks)

8 The frequency table shows the speeds of 100 cars.

Speed (km/h)	Frequency
$0 < s \leq 20$	3
$20 < s \leq 40$	14
$40 < s \leq 60$	28
$60 < s \leq 80$	21
$80 < s \leq 100$	17
$100 < s \leq 120$	6

Draw a frequency polygon to show this information.

1 mark for just one mistake



(Total for Question 8 is 2 marks)

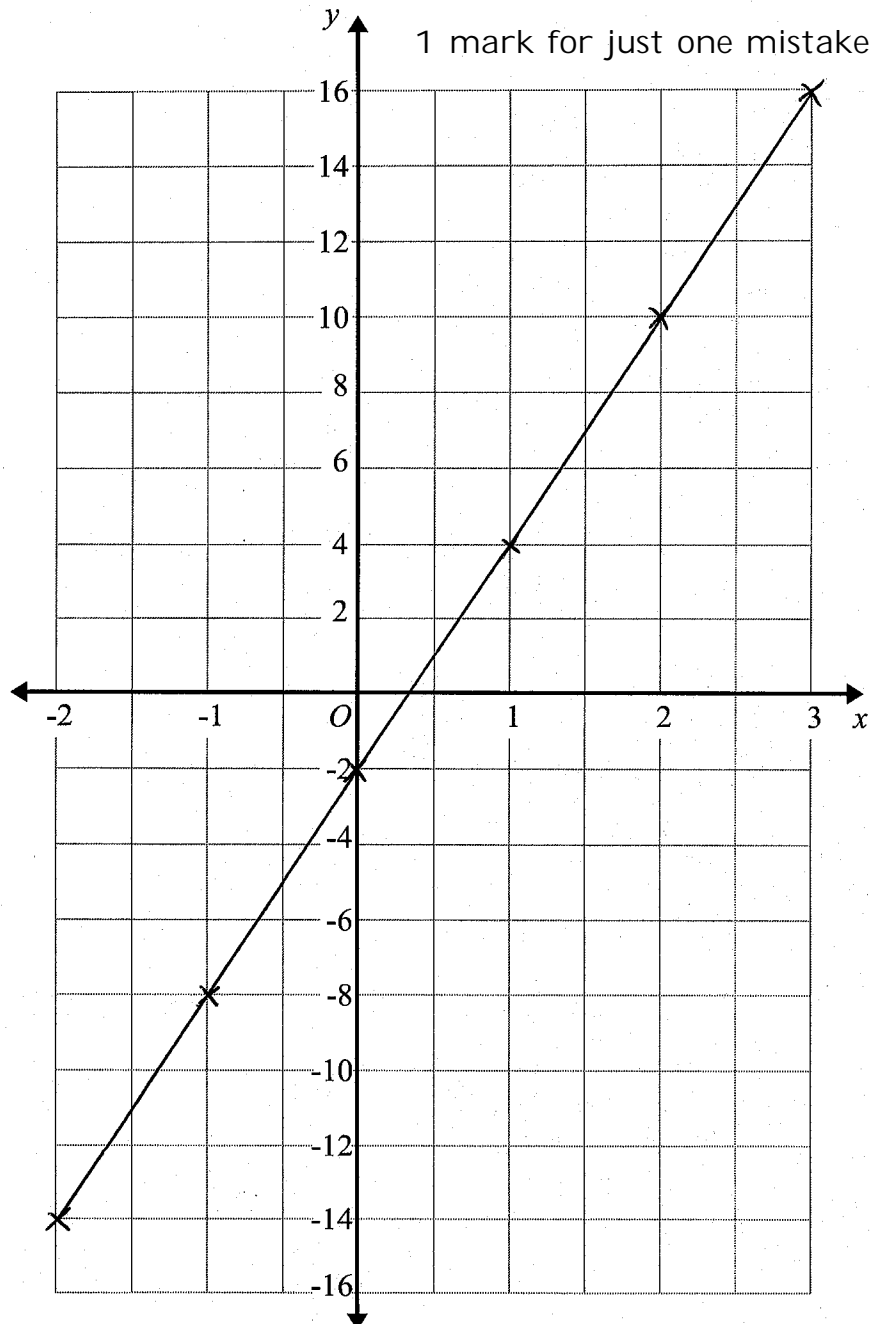
9 (a) Complete the table of values for $y = 6x - 2$

x	-2	-1	0	1	2	3
y	-14	-8	-2	4	10	16

1 mark for just one mistake

(2)

(b) On the grid, draw the graph of $y = 6x - 2$ for values of x from -2 to 3



(2)

(Total for Question 9 is 4 marks)