

Name: \_\_\_\_\_

## GCSE (1 – 9)

# Direct and Inverse Proportion

### Instructions

- Use **black** ink or ball-point pen.
- Answer all questions.
- Answer the questions in the spaces provided  
– *there may be more space than you need.*
- Diagrams are **NOT** accurately drawn, unless otherwise indicated.
- You must **show all your working out.**

### Information

- The marks for each question are shown in brackets  
– *use this as a guide as to how much time to spend on each question.*

### Advice

- Read each question carefully before you start to answer it.
- Keep an eye on the time.
- Try to answer every question.
- Check your answers if you have time at the end



3 3 tins of beans and 4 tins of tomatoes costs £2.73.

5 tins of beans costs £1.55.

Work out how much one tin of tomatoes costs.

5 tins of beans costs £1.55  
↓ ÷ 5

1 tin of beans costs £0.31

3 tins of beans costs £0.93  
↓ × 3

$$2.73 - 0.93 = \pounds 1.80$$

£1.80 for 4 tins of tomatoes

$$\pounds 1.80 \div 4 = \pounds 0.45$$

£0.45

(Total for question 3 is 2 marks)

4 There are 500 sheets in a pack of paper. 500 sheets of paper weigh 2.5kg.

Work out the weight of 50 sheets of paper.

500 sheets weigh 2.5kg  
↓ ÷ 10  
↓

50 sheets weigh 0.25kg

0.25kg

(Total for question 4 is 2 marks)

5 It takes 2 painters 4 days to complete a job.

Inverse proportion.  
More painters = Less time.

Work out how many days it would take 1 painter to complete the same job.

2 painters take 4 days

$2 \times 4 = 8$  8 days of work needed.

8

(Total for question 5 is 2 marks)

6 It takes 3 machines 2 days to produce a batch of products

Work out how long it would take 1 machine to produce the same batch of products.

$$3 \times 2 = 6$$

6 days of machine work needed

6

(Total for question 6 is 2 marks)

7 It takes 3 painters 6 days to complete a job.

Work out how many days it would take 2 painters to complete the same job.

$$3 \times 6 = 18$$

18 days of work needed

$$2 \text{ painters} \quad \frac{18}{2} = 9 \text{ days}$$

9

(Total for question 7 is 2 marks)

8 It takes 5 machines 6 hours to produce 1000 DVDs

Work out how long it would take 4 machines to produce 1000 DVDs.

$$5 \times 6 = 30 \text{ machine } \overset{\text{hours}}{\text{days}} \text{ needed}$$

$$\frac{30}{4} = 7.5 \text{ hours}$$

7.5 hours

(Total for question 8 is 2 marks)

9  $x$  is inversely proportional to  $y$ .

$x$  is given by the formula:  $x = \frac{1000}{y}$

Find the value of  $x$  when  $y = 50$

$$x = \frac{1000}{y}$$

$$x = \frac{1000}{50} = 20$$

$$x = \dots 20 \dots$$

(Total for question 9 is 2 marks)

10  $y$  is directly proportional to  $x$ .

$y$  is given by the formula:  $y = 0.4x$

Find the value of  $y$  when  $x = 6$

$$y = 0.4x$$

$$y = 0.4(6)$$

$$y = 2.4$$

$$y = \dots 2.4 \dots$$

(Total for question 10 is 2 marks)

11 The weight of a piece of wire ( $w$  grams) is directly proportional to its length ( $l$  cm).

$w$  is given by the formula:  $w = 30l$

Find the length of a wire weighing 75 grams.

$$\begin{aligned}w &= 30l \\75 &= 30l \\ \frac{75}{30} &= l \\ l &= 2.5\end{aligned}$$

$$l = \dots 2.5 \dots \text{cm}$$

(Total for question 11 is 2 marks)

12 The force,  $F$ , between two magnets is inversely proportional to the square of the distance,  $x$  cm, between them.

$F$  is given by the formula:  $F = \frac{36}{x^2}$

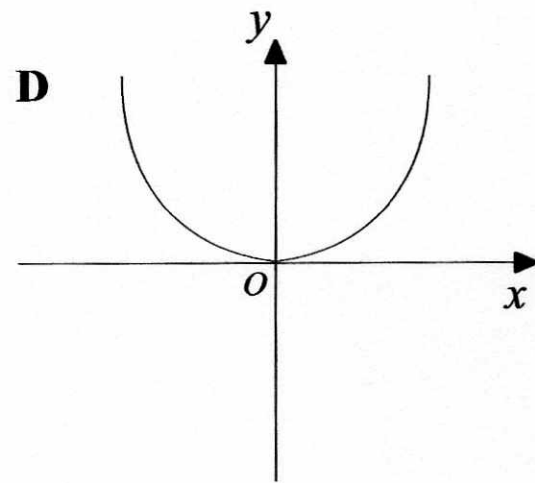
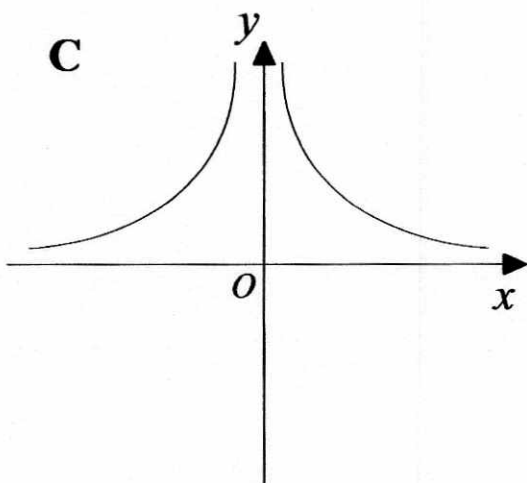
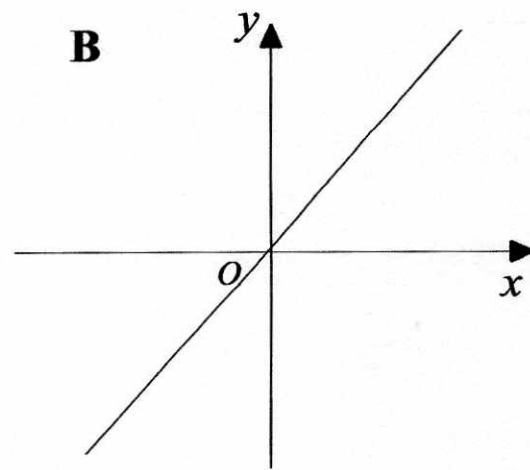
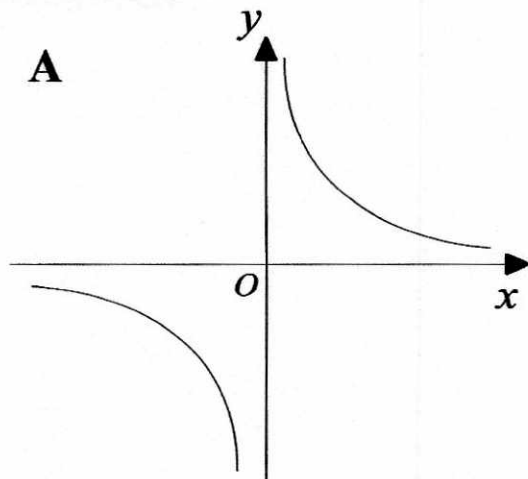
Find the Force when two magnets are 3 cm apart.

$$\begin{aligned}F &= \frac{36}{x^2} \\ &= \frac{36}{3^2} \\ &= \frac{36}{9} \\ &= 4\end{aligned}$$

$$F = \dots 4 \dots \text{N}$$

(Total for question 12 is 2 marks)

13 Here are four graphs.



Match each graph with a statement in the table below.

Proportionality relationship	Graph letter
$y$ is directly proportional to $x$	B
$y$ is inversely proportional to $x$	A
$y$ is directly proportional to $x^2$	D
$y$ is inversely proportional to $x^2$	C

(Total for question 13 is 2 marks)