



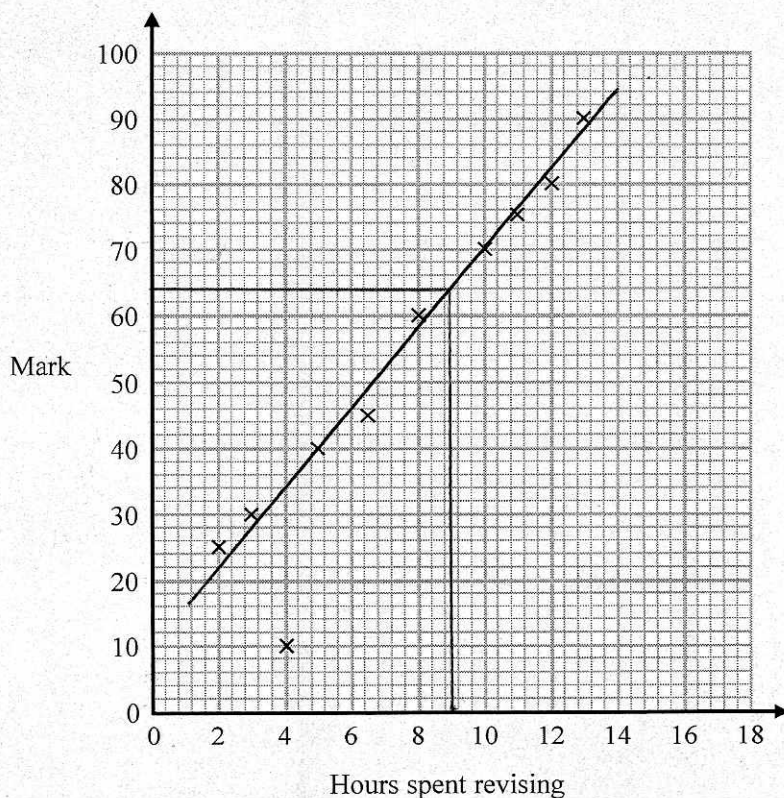
Answer ALL questions.

Write your answers in the spaces provided.

You must write down all the stages in your working.

- 1 The scatter diagram shows information about 10 students.

For each student, it shows the number of hours spent revising and the mark the student achieved in the Spanish test.



One of the points is an outlier.

- (a) Write down the coordinates of the outlier.

(4, 10)  
(1)



For all the **other** points

- (b) (i) draw the line of best fit,  
(ii) describe the correlation.

As the number of hours spent revising  
increases the mark achieved increases  
(2)

A different student studies for 9 hours.

- (c) Estimate the mark gained by this student.

62  
(1)

The Spanish test was marked out of 100

Lucia says,

“I can see from the graph that had I revised for 18 hours I would have got full marks.”

- (d) Comment on what Lucia says.

18 is out of the range of data provided  
so she ~~shouldn't~~ <sup>may not</sup>  
(1)

(Total for Question 1 is 5 marks)

- 2 The length,  $L$  cm, of a line is measured as 13 cm correct to the nearest centimetre.

Complete the following statement to show the range of possible values of  $L$

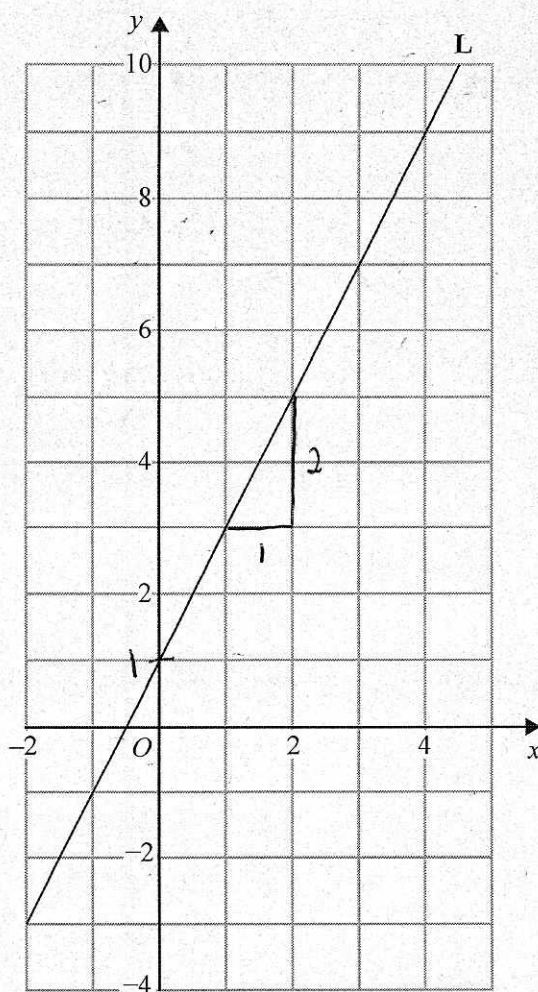
$12.5 \leq L < 13.5$

(Total for Question 2 is 2 marks)



S 4 9 8 2 0 A 0 3 2 0

3 Line L is drawn on the grid below.



Find the equation for the straight line L.

Give your answer in the form  $y = mx + c$

↑  
gradient      y intercept  
 $m = 2$        $c = 1$

$y = 2x + 1$

(Total for Question 3 is 3 marks)



DO NOT WRITE IN THIS AREA

DO NOT WRITE IN THIS AREA

DO NOT WRITE IN THIS AREA

DO NOT WRITE IN THIS AREA

DO NOT WRITE IN THIS AREA

DO NOT WRITE IN THIS AREA

4 Jenny works in a shop that sells belts.

The table shows information about the waist sizes of 50 customers who bought belts from the shop in May.

Belt size	Waist ( $w$ inches)	Frequency
Small	$28 < w \leq 32$	24
Medium	$32 < w \leq 36$	12
Large	$36 < w \leq 40$	8
Extra Large	$40 < w \leq 44$	6

720  
408  
304  
252  

---

1684

(a) Calculate an estimate for the mean waist size.

$$\frac{1684}{50} = 33.68$$

33.68 inches  
(3)

Belts are made in sizes Small, Medium, Large and Extra Large.

Jenny needs to order more belts in June.

The modal size of belts sold is Small.

Jenny is going to order  $\frac{3}{4}$  of the belts in size Small.

The manager of the shop tells Jenny she should **not** order so many Small belts.

(b) Who is correct, Jenny or the manager?

You must give a reason for your answer.

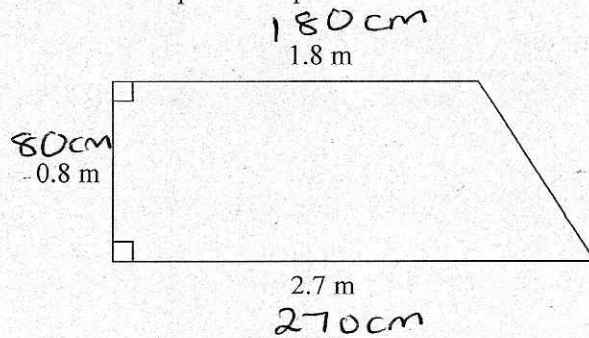
$\frac{24}{50}$  is less than half. The manager  
is correct.  $\frac{24}{50}$  is not close to  $\frac{3}{4}$   
(2)

(Total for Question 4 is 5 marks)



S 4 9 8 2 0 A 0 5 2 0

- 5 The diagram shows a wall in the shape of a trapezium.



Karen is going to cover this part of the wall with tiles.  
Each tile is rectangular, 15 cm by 7.5 cm

Tiles are sold in packs.  
There are 9 tiles in each pack.

Karen divides the area of this wall by the area of a tile to work out an estimate for the number of tiles she needs to buy.

- (a) Use Karen's method to work out the estimate for the number of packs of tiles she needs to buy.

$$\text{Area of trapezium} = \frac{180 + 270}{2} \times 80$$
$$= 18000 \text{ cm}^2$$

$$\text{Area of tile} = 15 \times 7.5$$
$$= 112.5 \text{ cm}^2$$

$$\frac{18000}{112.5} = \underline{\underline{160 \text{ tiles}}}$$

$$\frac{160}{9} = 17.\dot{7}$$

so 18 packs

18  
(5)



Karen is advised to buy 10% more tiles than she estimated.  
Buying 10% more tiles will affect the number of the tiles Karen needs to buy.

She assumes she will need to buy 10% more packs of tiles.

- (b) Is Karen's assumption correct?  
You must show your working.

$$10\% \text{ of } 18 = 1.8$$

so 20 packs

$$10\% \text{ of } 160 = 16$$
$$\frac{176}{9} = 19.5$$

so 20 packs

Yes her assumption is correct (2)

(Total for Question 5 is 7 marks)



S 4 9 8 2 0 A 0 7 2 0

6 Factorise  $x^2 + 3x - 4$

$$(x+4)(x-1)$$

(Total for Question 6 is 2 marks)

7 Here are the equations of four straight lines.

Line A	$y = 2x + 4$	$y = 2x + 4$
Line B	$2y = x + 4$	$y = \frac{1}{2}x + 2$
Line C	$2x + 2y = 4$	$y = -x + 2$
Line D	$2x - y = 4$	$y = 2x - 4$

Two of these lines are parallel.

Write down the two parallel lines?

Line A and line D

(Total for Question 7 is 1 mark)





- 8 Ian invested an amount of money at 3% per annum compound interest. At the end of 2 years the value of the investment was £2652.25

(a) Work out the amount of money Ian invested.

$$\begin{aligned}x \times 1.03^2 &= 2652.25 \\x &= \frac{2652.25}{1.03^2} \\&= 2500\end{aligned}$$

£ 2500  
(3)

Noah has an amount of money to invest for five years.

Saver Account
4% per annum compound interest.

Investment Account
21% interest paid at the end of 5 years.

Noah wants to get the most interest possible.

- (b) Which account is best?  
You must show how you got your answer.

$$\begin{array}{ll}100 \times 1.04^5 & 100 \times 1.21 \\= 121.6652902 & = 121 \\(21.67\%) & (21\%) \end{array}$$

The saver account will give more interest

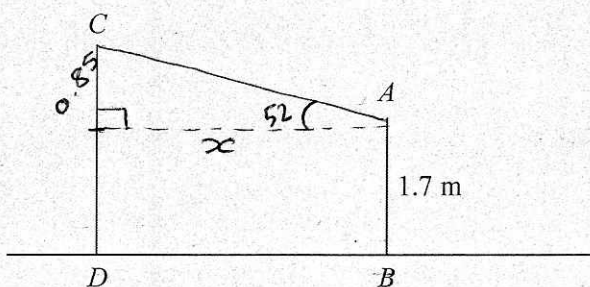
(2)

(Total for Question 8 is 5 marks)



S 4 9 8 2 0 A 0 9 2 0

- 9 The diagram shows two vertical posts,  $AB$  and  $CD$ , on horizontal ground.



$$AB = 1.7 \text{ m}$$

$$CD : AB = 1.5 : 1$$

The angle of elevation of  $C$  from  $A$  is  $52^\circ$

Calculate the length of  $BD$ .

Give your answer correct to 3 significant figures.

$$CD = 1.7 \times 1.5$$

$$= 2.55 \text{ m}$$

$$2.55 - 1.7 = 0.85 \text{ m}$$

$$\tan(\theta) = \frac{O}{A}$$

$$\tan(52) = \frac{0.85}{x}$$

$$x = \frac{0.85}{\tan(52)}$$

$$= 0.664 \text{ m}$$

$$0.664 \text{ m}$$

(Total of Question 9 is 4 marks)



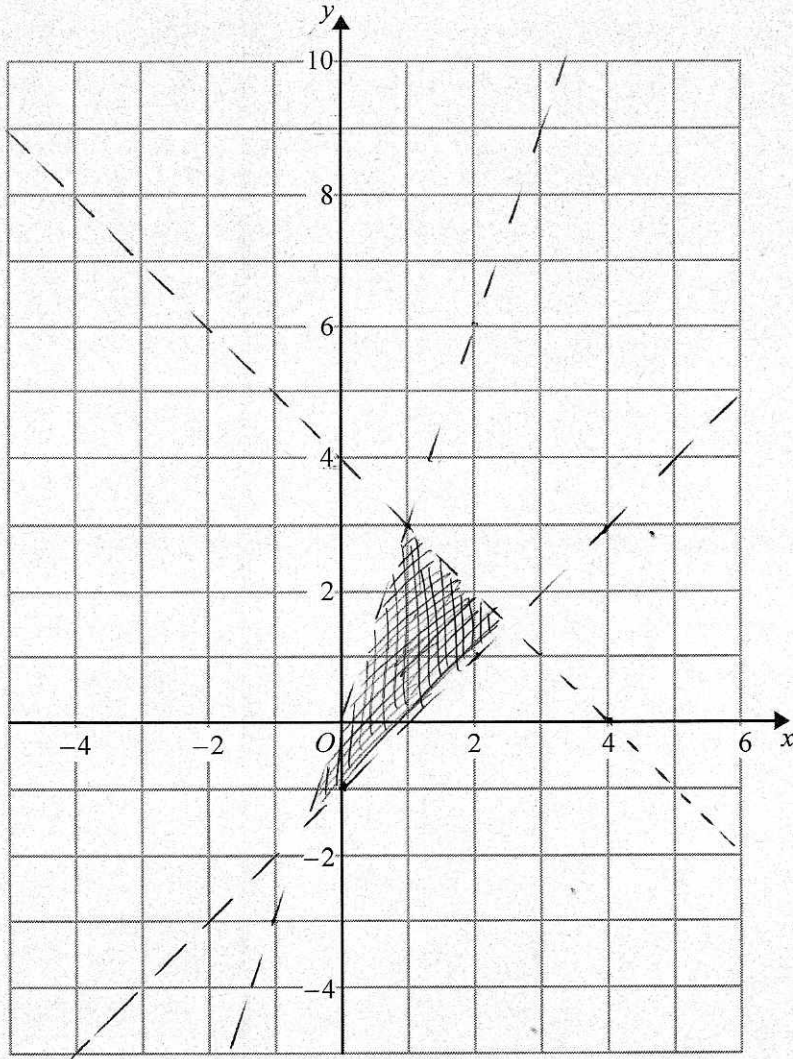
10 On the grid, shade the region that satisfies all these inequalities.

Label the region R.  $x+y < 4$       $y > x-1$       $y < 3x$

$x$	$ $	$0$	$ $	$2$	$ $	$4$
$y$	$ $	$4$	$ $	$2$	$ $	$0$

$x$	$ $	$0$	$ $	$2$	$ $	$4$
$y$	$ $	$-1$	$ $	$1$	$ $	$3$

$x$	$ $	$0$	$ $	$2$	$ $	$4$
$y$	$ $	$0$	$ $	$6$	$ $	$12$



(Total for Question 10 is 4 marks)



- 11 Write  $x^2 + 2x - 8$  in the form  $(x + m)^2 + n$  where  $m$  and  $n$  are integers.

$$(x + 1)^2 - 1 - 8$$

$$(x + 1)^2 - 9$$

$$(x + 1)^2 - 9$$

(Total for Question 11 is 2 marks)

DO NOT WRITE IN THIS AREA

DO NOT WRITE IN THIS AREA

DO NOT WRITE IN THIS AREA

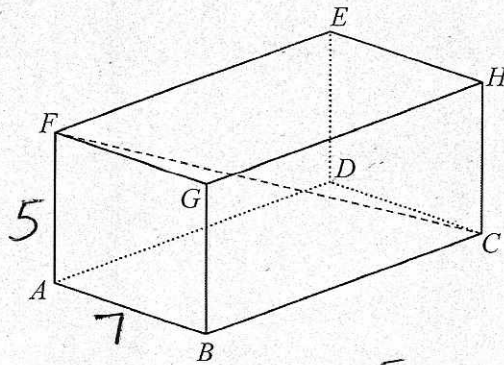
DO NOT WRITE IN THIS AREA

DO NOT WRITE IN THIS AREA

DO NOT WRITE IN THIS AREA

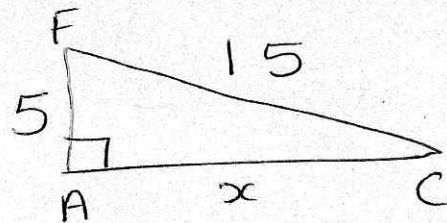


12 The diagram shows a cuboid  $ABCDEFGH$ .



$AB = 7$  cm,  $AF = 5$  cm and  $FC = 15$  cm.

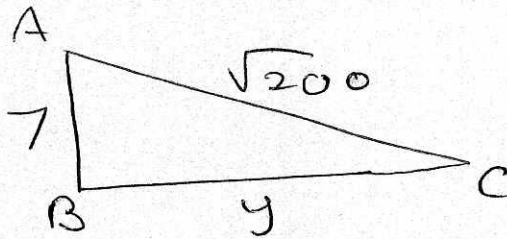
Calculate the volume of the cuboid.  
Give your answer correct to 3 significant figures.



$$15^2 - 5^2 = x^2$$

$$200 = x^2$$

$$x = \sqrt{200}$$



$$(\sqrt{200})^2 - 7^2 = y^2$$

$$y^2 = 151$$

$$y = \sqrt{151}$$

$$\text{Volume} = 5 \times 7 \times \sqrt{151}$$

$$= 430 \text{ (3sf)}$$

430 cm<sup>3</sup>

(Total for Question 12 is 4 marks)



13 There are 14 boys and 12 girls in a class.

Work out the total number of ways that 1 boy and 1 girl can be chosen from the class.

$$14 \times 12$$

$$168$$

(Total for Question 13 is 2 marks)

14 Write

$$4 - \left[ (x+3) \div \frac{x^2+5x+6}{x-2} \right]$$

as a single fraction in its simplest form.  
You must show your working.

$$4 - \left( \frac{x+3}{1} \times \frac{x-2}{x^2+5x+6} \right)$$

$$4 - \left( \frac{(x+3)(x-2)}{x^2+5x+6} \right)$$

$$4 - \left( \frac{(\cancel{x+3})(x-2)}{(\cancel{x+3})(x+2)} \right)$$

$$\frac{4}{1} - \frac{x-2}{x+2}$$

$$\frac{4(x+2)}{x+2} - \frac{(x-2)}{x+2}$$

$$\frac{4x+8-x+2}{x+2} = \frac{3x+10}{x+2}$$

$$\frac{3x+10}{x+2}$$

(Total for Question 14 is 4 marks)



- 15 A virus on a computer is causing errors.  
An antivirus program is run to remove these errors.

An estimate for the number of errors at the end of  $t$  hours is  $10^6 \times 2^{-t}$

- (a) Work out an estimate for the number of errors on the computer at the end of 8 hours.

$$10^6 \times 2^{-8} = 3906.25$$

3906  
(2)

- (b) Explain whether the number of errors on this computer ever reaches zero.

using this formula the number will never reach zero as  $2^{-t}$  will always be above zero. (But it will reach zero to the nearest whole number)

(1)

(Total for Question 15 is 3 marks)

- 16 The graph of  $y = f(x)$  is transformed to give the graph of  $y = -f(x + 3)$   
The point  $A$  on the graph of  $y = f(x)$  is mapped to the point  $P$  on the graph of  $y = -f(x + 3)$

The coordinates of point  $A$  are  $(9, 1)$   
Find the coordinates of point  $P$ .

- 3 from  $x$   
 $x - 1$  for  $y$   
(multiply by -1)

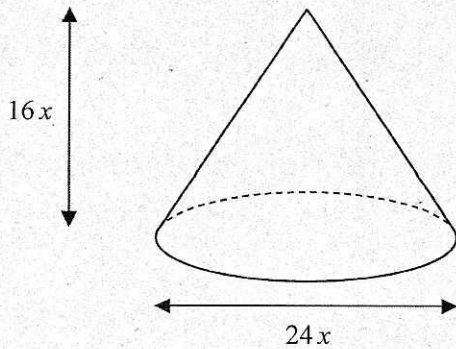
(6, -1)

(Total for Question 16 is 2 marks)



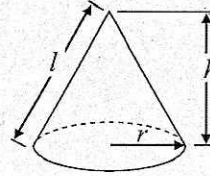
S 4 9 8 2 0 A 0 1 5 2 0

17 The diagram shows a solid cone.



$$\text{Volume of cone} = \frac{1}{3}\pi r^2 h$$

$$\text{Curved surface area of cone} = \pi r l$$



The diameter of the base of the cone is  $24x$  cm.  
The height of the cone is  $16x$  cm.

The curved surface area of the cone is  $2160\pi$  cm<sup>2</sup>.  
The volume of the cone is  $V\pi$  cm<sup>3</sup>, where  $V$  is an integer.

Find the value of  $V$ .

$r = 12x$

A hand-drawn right-angled triangle with a right-angle symbol at the bottom right. The vertical side is labeled  $16$ , the horizontal side is labeled  $12$ , and the hypotenuse is labeled  $20$ .

$l = 20x$

$$\text{curved surface area} = \pi r l$$

$$2160\pi = \pi(12x)(20x)$$

$$2160\pi = 240x^2\pi$$

$$9 = x^2$$

$$x = 3$$

$$\text{Volume} = \frac{1}{3}\pi r^2 h$$

$$= \frac{1}{3}\pi (36)^2 (48)$$

$$= 20736\pi$$

$$r = 12x$$

$$= 36\text{cm}$$

$$h = 16x$$

$$= 48\text{cm}$$

20736

(Total for Question 17 is 5 marks)

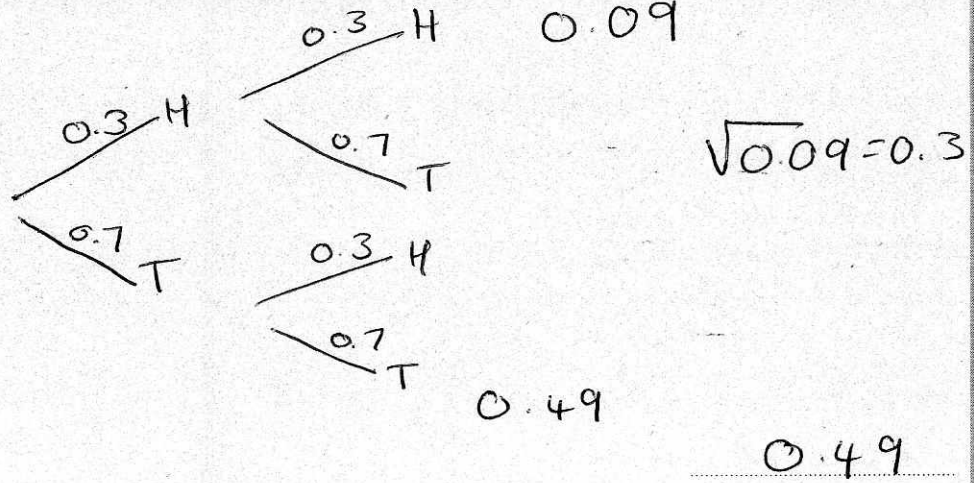




18 Thelma spins a biased coin twice.

The probability that it will come down heads both times is 0.09

Calculate the probability that it will come down tails both times.



(Total for Question 18 is 3 marks)

19 (a) Write 0.000423 in standard form.

$$4.23 \times 10^{-4}$$

(1)

(b) Write  $4.5 \times 10^4$  as an ordinary number.

$$45000$$

(1)

(Total for Question 19 is 2 marks)



S 4 9 8 2 0 A 0 1 7 2 0

20 Mark has made a clay model.

He will now make a clay statue that is mathematically similar to the clay model.

The model has a base area of  $6 \text{ cm}^2$

The statue will have a base area of  $253.5 \text{ cm}^2$

Mark used 2kg of clay to make the model.

Clay is sold in 10kg bags.

Mark has to buy all the clay he needs to make the statue.

How many bags of clay will Mark need to buy?

$$\frac{253.5}{6} = \frac{169}{4} \quad (\text{Area scale factor})$$

$$\sqrt{\frac{169}{4}} = 6.5 \quad (\text{Length Scale Factor})$$

$$(6.5)^3 = \frac{2197}{8} \quad (\text{Volume Scale Factor})$$

$$\frac{549.25}{10} = 54.925$$

$$2 \times \frac{2197}{8} = 549.25$$

55 bags

(Total for Question 20 is 3 marks)

DO NOT WRITE IN THIS AREA

DO NOT WRITE IN THIS AREA

DO NOT WRITE IN THIS AREA

DO NOT WRITE IN THIS AREA

DO NOT WRITE IN THIS AREA

DO NOT WRITE IN THIS AREA



21 (a) Show that the equation  $3x^2 - x^3 + 3 = 0$  can be rearranged to give

$$+x^3 \quad +x^3$$
$$x = 3 + \frac{3}{x^2}$$

$$\frac{3x^2}{x^2} + \frac{3}{x^2} = \frac{x^3}{x^2}$$

$$3 + \frac{3}{x^2} = x$$

$$x = 3 + \frac{3}{x^2}$$

(2)

(b) Using

$$x_{n+1} = 3 + \frac{3}{x_n^2} \quad \text{with } x_0 = 3.2,$$

find the values of  $x_1$ ,  $x_2$  and  $x_3$

$$x_1 = 3 + \frac{3}{(3.2)^2} = 3.29296875$$

$$x_2 = 3 + \frac{3}{(\text{Ans})^2} = 3.276659786$$

$$x_3 = 3 + \frac{3}{(\text{Ans})^2} = 3.279420685$$

(3)

(c) Explain what the values of  $x_1$ ,  $x_2$  and  $x_3$  represent.

Answers to  $3x^2 - x^3 + 3 = 0$

(1)

(Total for Question 21 is 6 marks)



S 4 9 8 2 0 A 0 1 9 2 0

22 Here are the first five terms of an arithmetic sequence

$$\begin{array}{cccccc}
 & & +6 & +6 & +6 & \\
 & 7 & 13 & 19 & 25 & 31 \\
 6n & 6 & 12 & 18 & 24 & 30
 \end{array}$$

Prove that the difference between the squares of any two terms of the sequence is always a multiple of 24

$$(6n+1)^2 - (6m+1)^2$$

$$(6n+1)(6n+1) - (6m+1)(6m+1)$$

$$(36n^2 + 6n + 6n + 1) - (36m^2 + 6m + 6m + 1)$$

$$(36n^2 + 12n + 1) - (36m^2 + 12m + 1)$$

$$36n^2 - 36m^2 + 12n - 12m$$

$$\cancel{(6n+6m)(6n-6m)} +$$

$$12(3n^2 - 3m^2 + n - m)$$

12 x even is a multiple of 24

$$(3n^2 - 3m^2) + (n - m) \text{ is even}$$

$$(even - odd) + (even - odd) = odd + odd = even$$

$$(odd - even) + (odd - even) = odd + odd = even$$

$$(even - even) + (even - even) = even + even = even$$

(Total for Question 22 is 6 marks)

TOTAL FOR PAPER IS 80 MARKS

